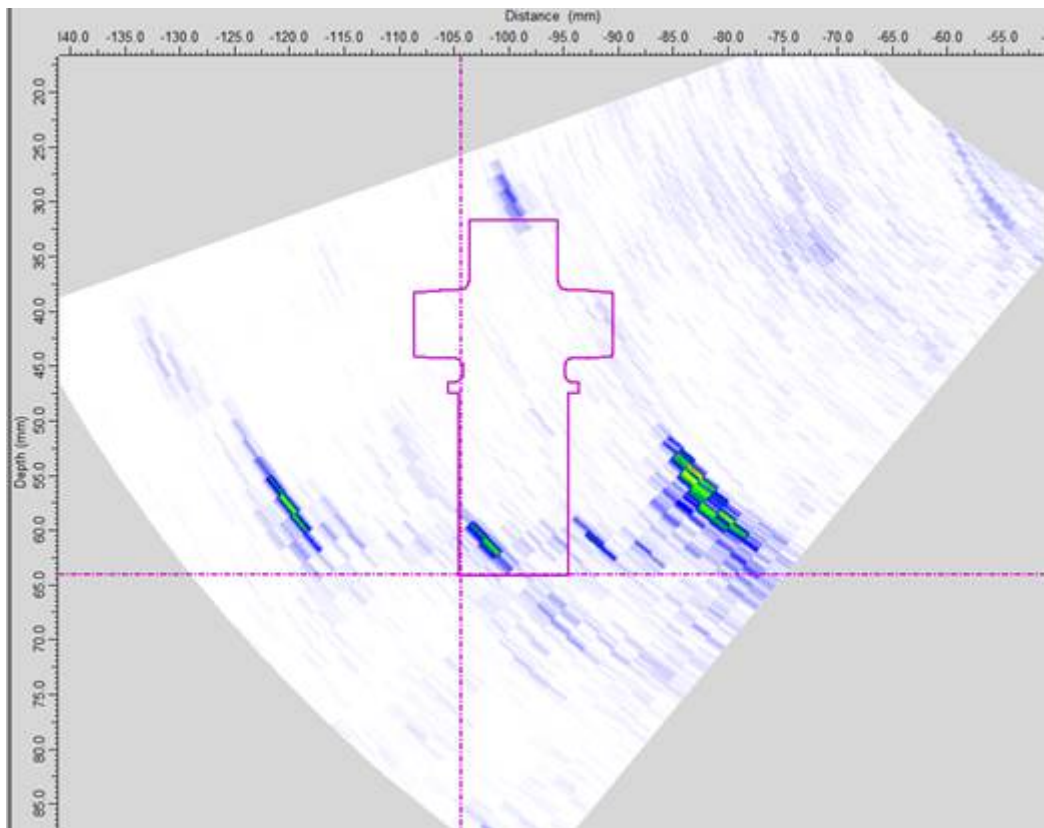
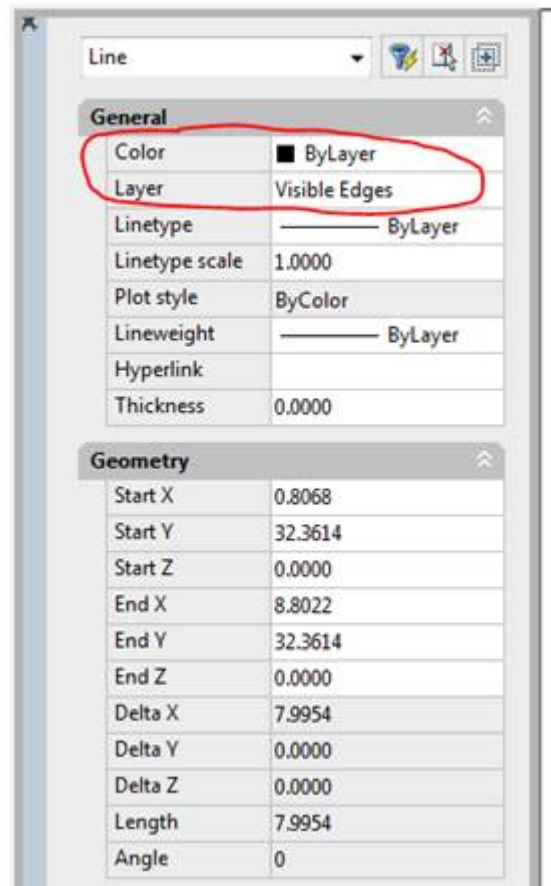
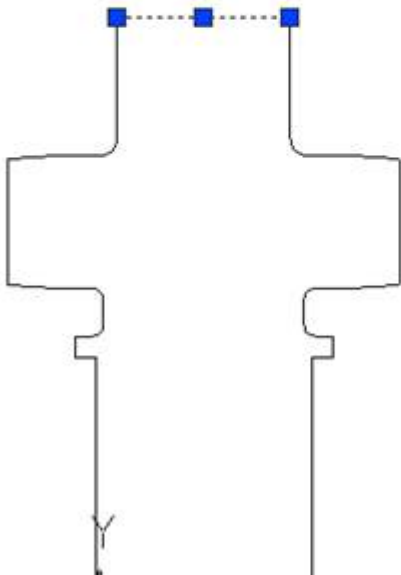


Importing .dxf files as an overlay

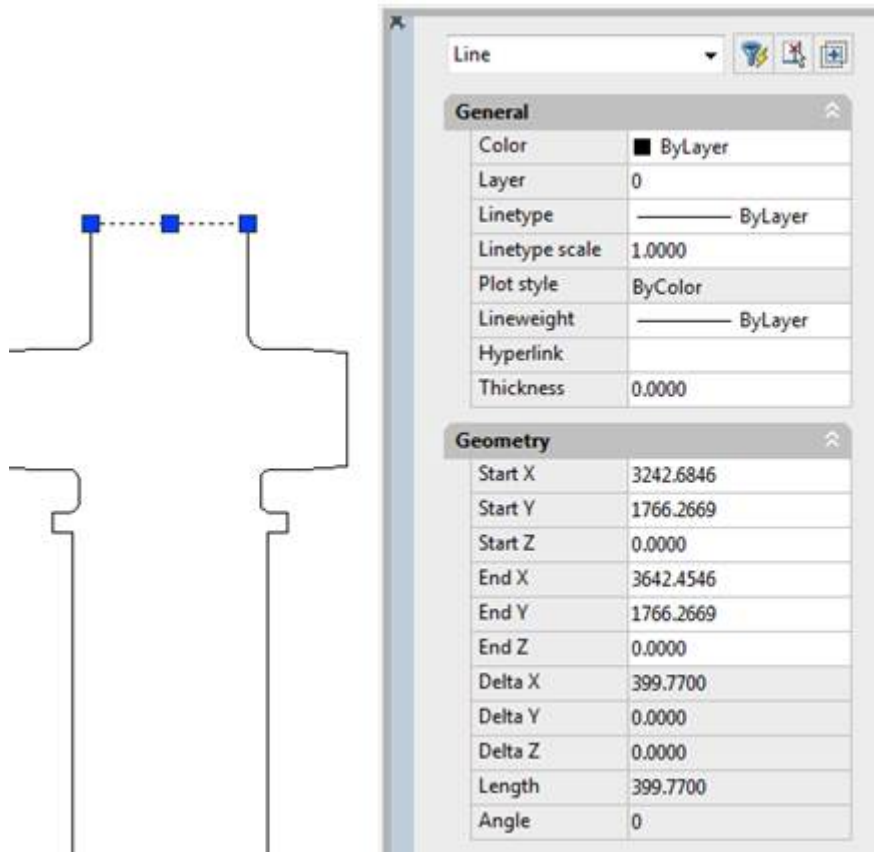
Below shows the import of a CAD file, .DXF type = AutoCAD LT 2004.



Only items in the **Visible Edges** Layer are imported, all other items are ignored. The data has also been massively rescaled and re-positioned.



Here is a screen shot showing the coordinates of the same line in the original data. Also, note the item is in Layer 0.



New DeltaX = 8mm, old DeltaX = 399mm.

In Summary:

1. Added **Visible Edges** layer to drawing.
2. Moved all items (lines, arcs, etc...) into the **Visible Edges** layer.
3. Re-scaled the data.
4. Re-opsitioned the data.