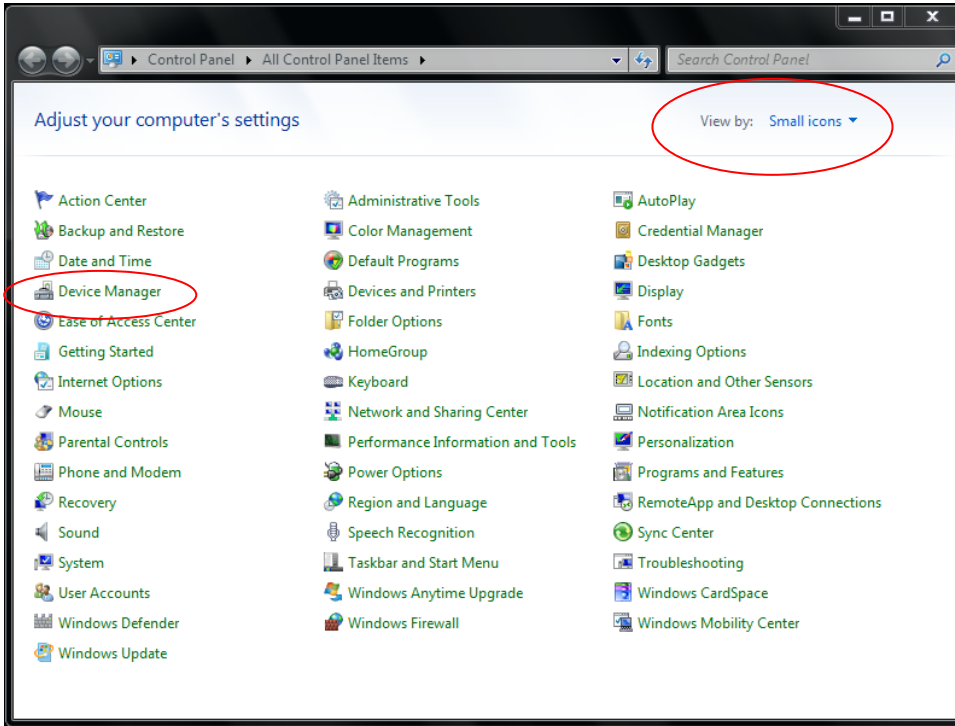
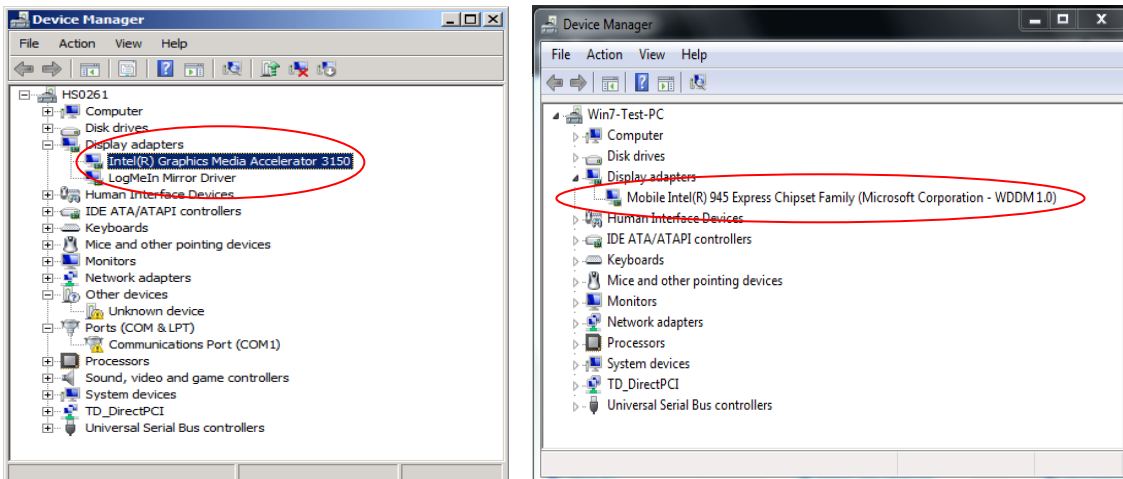


Fix for data collection stopping:

1. Press Windows <Start> button and select <Control Panel>.
2. If not already in Icon view, select <View by: Small icons>.

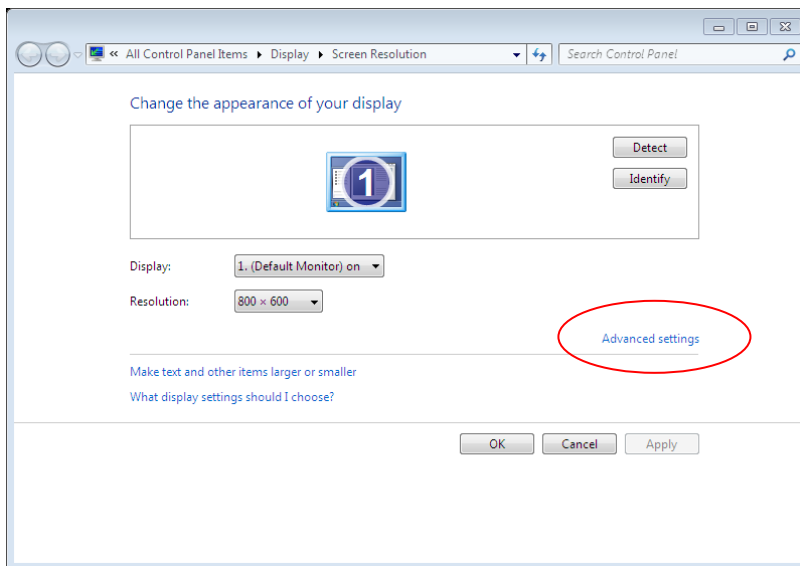


3. Double click the <Device Manager> icon.

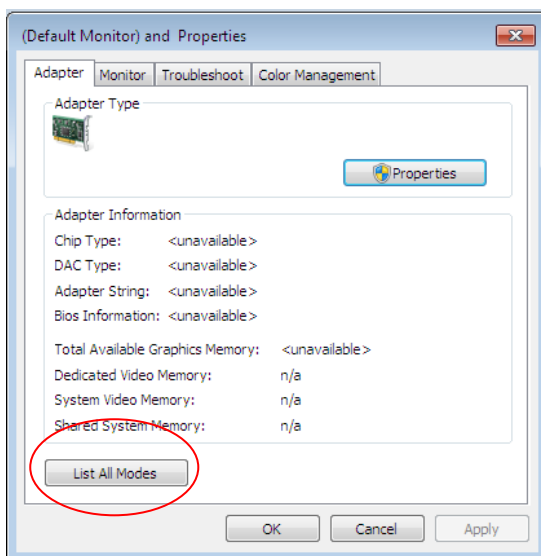


4. Expand <Display adapters>, and select the display adaptor.
5. Press the right mouse button, and select <Disable> from the pop-up menu.
6. Reboot.

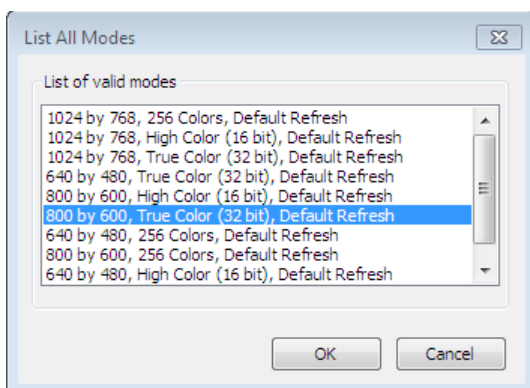
7. Once Windows has rebooted; with the mouse on the desktop press the right mouse button, and on the pop-up menu select **<Screen Resolution>**.



8. Select **<Advanced settings>**.



9. Press the button **<List All Modes>**.



10. Select **<800 by 600, True Color (32 bit), Default Refresh>**, and press **<OK>**.