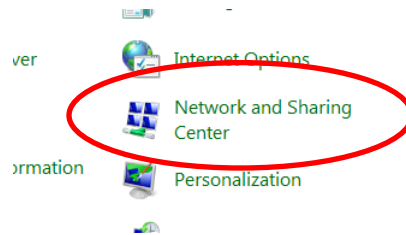


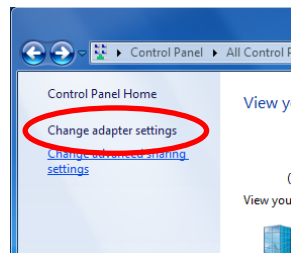
Connecting to a PS45.

Windows 7:

1. Press the <Start> button, and select <Control Panel>.
2. Switch the view to <Large icons>, and select <Network and Sharing Center>.

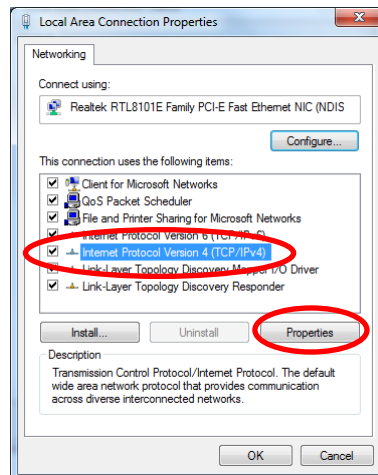


3. In the Network and Sharing Center dialog, select <Change adapter settings>.

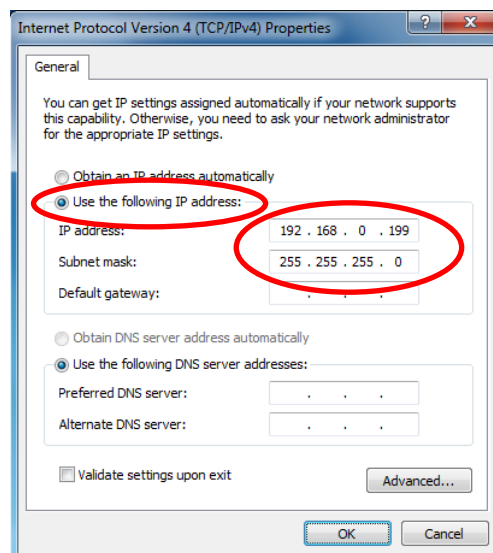


4. From the list of available network connections select (*double click mouse button*) the one that the PS45 will be connected to.
5. In the Connection Status dialog, select the <Properties> button.

6. In the properties dialog select <Internet Protocol Version 4 (TCP/IPv4)>, and then press the <Properties> button.



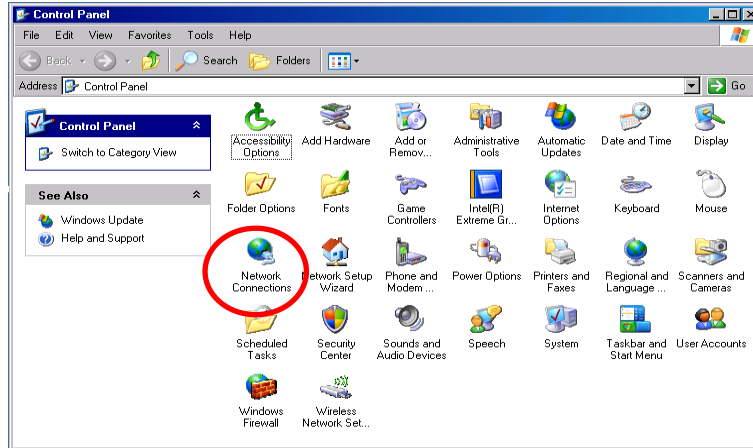
7. In the Internet Protocol (TCP/IP) Properties dialog set the following:-
 - Use the following IP address.
 - IP address: **192.168.0.199**
 - Subnet mark: **255.255.255.0**



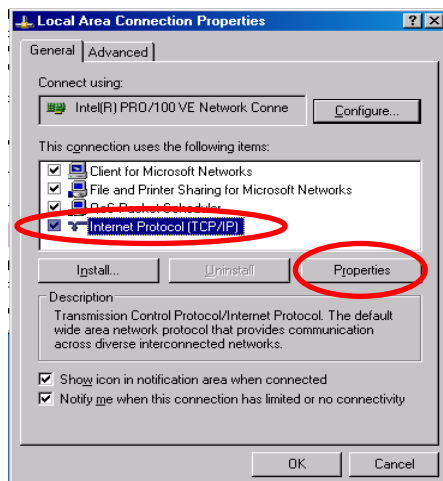
Connecting to a PS45.

Windows XP:

8. Press the <Start> button, and select <Control Panel>.
9. Switch to <Classic View>, and select <Network Connections>.



10. From the list of available network connections select (*double click mouse button*) the one that the PS45 will be connected to.
11. In the Connection Status dialog, select the <Properties> button.
12. In the properties dialog select <Internet Protocol (TCP/IP)>, and then press the <Properties> button.



13. In the Internet Protocol (TCP/IP) Properties dialog set the following:-
 - Use the following IP address.
 - IP address: **192.168.0.199**
 - Subnet mark: **255.255.255.0**

